



Enviroschools in Westland

Lauren Kelley – Enviroschools Regional Coordinator
Laura Neale – Enviroschools Facilitator



What is special about Enviroschools?

National network of change makers with a focus on empowering children and young people

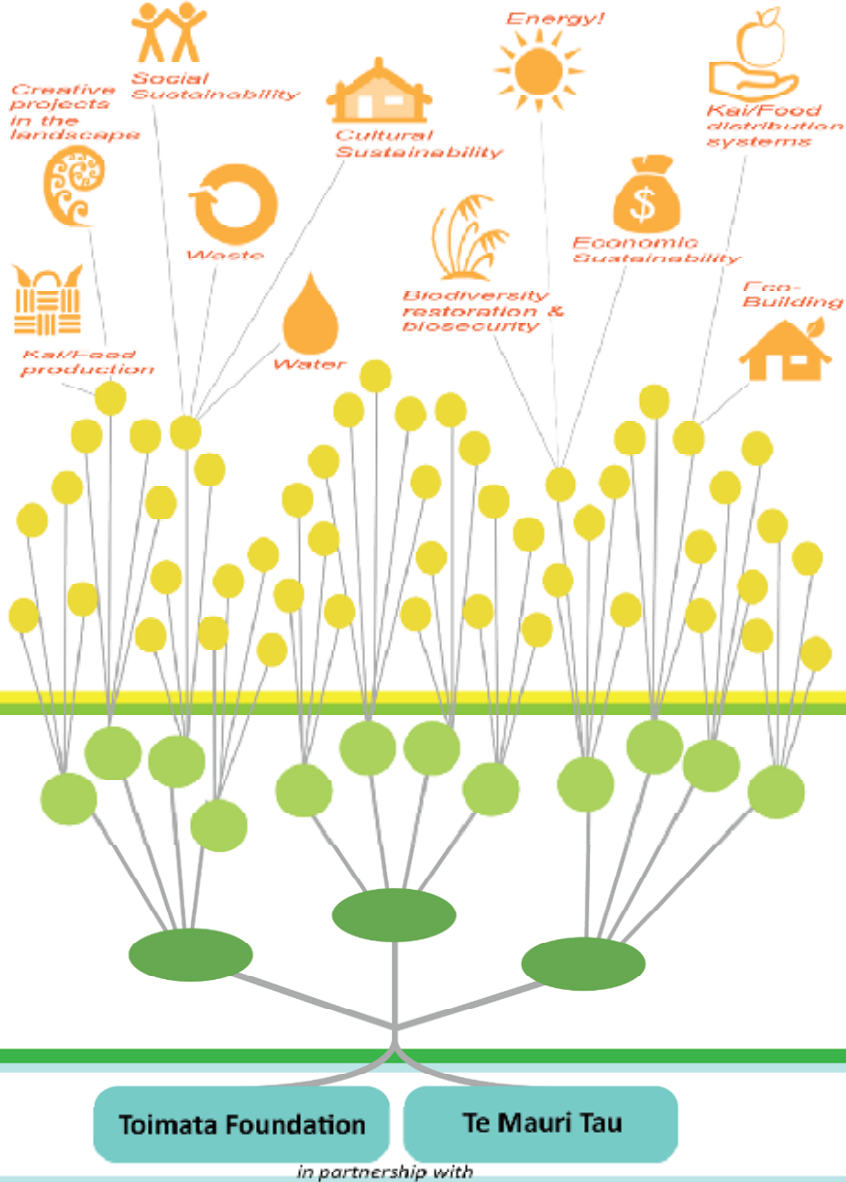
Holistic approach to the development of connected, resilient and sustainable communities

Addresses the **root causes of issues**, not just the symptoms

Came from a community-council partnership and is **designed to meet Local Government outcomes**



Organisational model for the Enviroschools Programme



Tens of thousands of innovative projects and lifestyle changes are happening in schools/centres, households, neighbourhoods, on farms, in local businesses and in all types of ecosystems.

Community support

Active participation from schools and ECEs

Enviroschools Community Facilitators

Regional Leadership

National Hub

All Enviroschools are engaging in a range of sustainability actions

Environmental sustainability actions:



100%
Zero Waste



97%
Kai/food
production



92%
Kai/food
distribution



92%
Creative projects
in the landscape



88%
Biodiversity
and biosecurity



83%
Water health
and conservation



67%
Energy!



63%
Ecological
Building

Cultural, Social and Economic sustainability actions:



99%
Cultural
sustainability

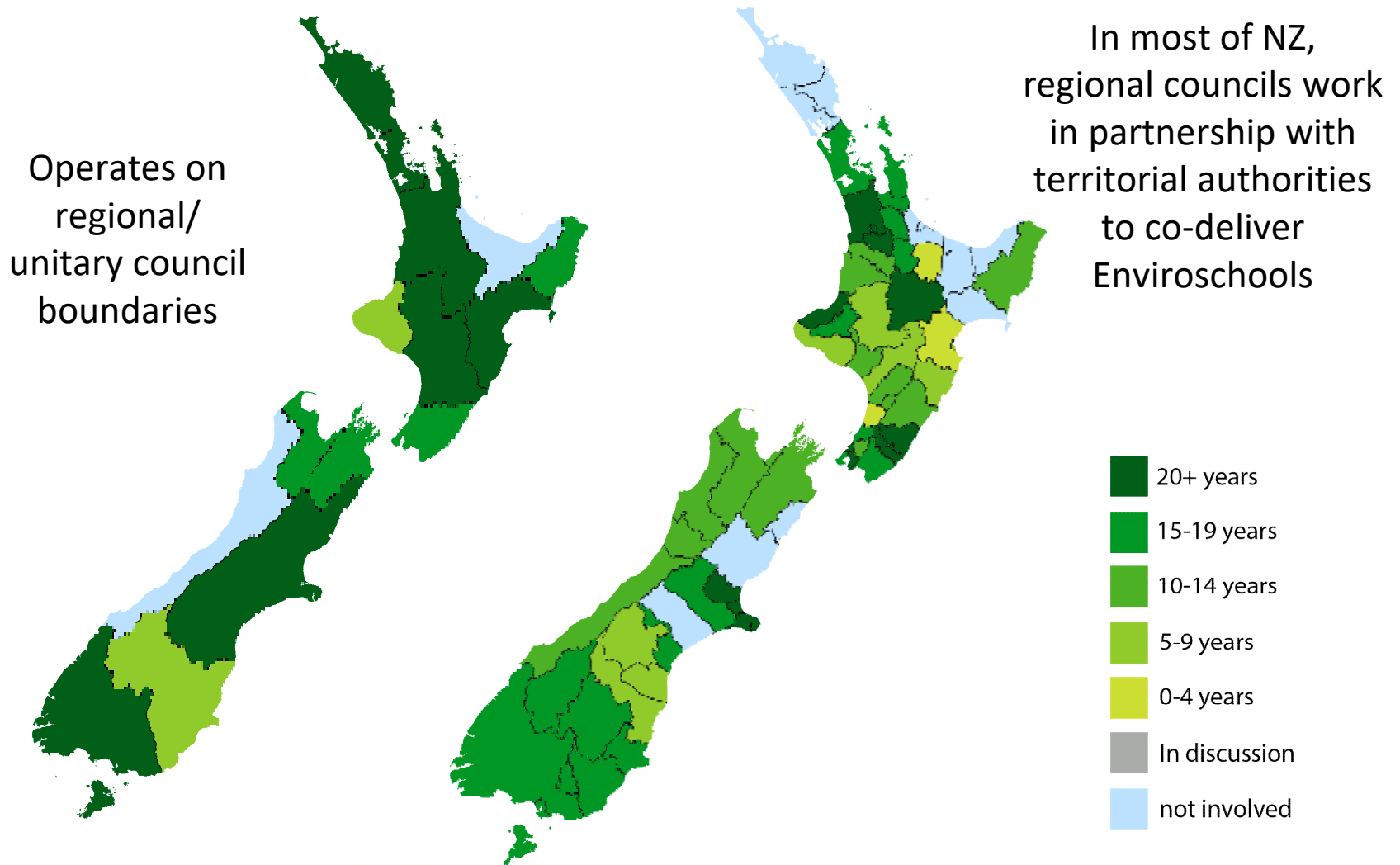


89%
Social
sustainability



75%
Economic
sustainability

Over 80% of councils nationwide are partners



18 Enviroschools



5
ECE centres

13
Schools

1,600
Tamariki & students

31% of early childhood
41% of primary & intermediate
0% of secondary

50% of composite & other

4 Regional Partners

4 Collaborators

Current Situation in Westland

8

Enviroschools

3

ECE centres

5

Schools

Active Explorers
Haast School
Harper Park Early Learning
Centre
Hokitika Primary School

Kaniere School
Kidsfirst Kindergartens
Kokatahi-Kowhitirangi
School
St Mary's School



Enviroschools contribution to WDC's Vision

"We work with the people of Westland to grow and protect our communities, our economy and our unique natural environment."

A Diverse Economy

This means that...

- We work to find sustainable, diverse and resilient options for encouraging economic growth.
- We work to find sustainable, diverse and resilient options for encouraging economic growth.
- We collaborate with other stakeholders to achieve common outcomes.
- Economic growth has a minor / reduced impact on the natural environment.

A Sustainably Managed Environment

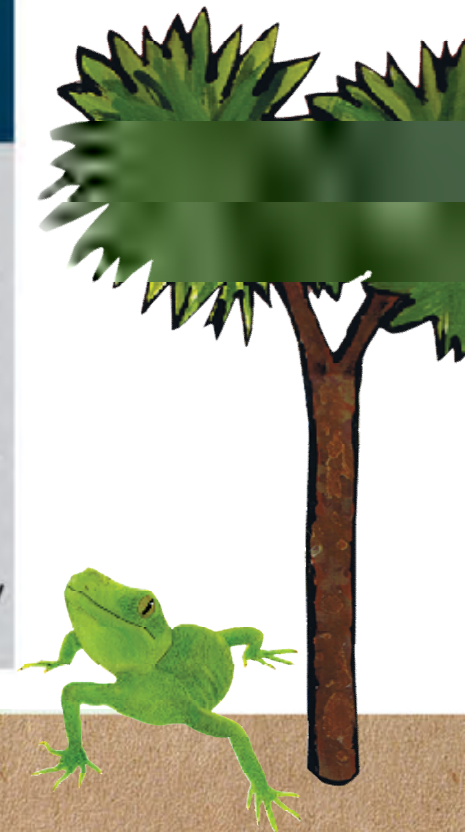
This means that...

- The district is involved in sustainable waste management practices.
- We support sustainable environmental practices.
- We support strategies to enhance and protect the district's ecosystems.
- Development is sustainable, meeting the needs of the present without compromising the ability of future generations to meet their own needs.

Resilient Communities

This means that...

- All areas of the district have access to quality recreational and cultural facilities.
- A community that cares for all members at all life stages to reduce isolation and promote inclusion.
- Communities less vulnerable to natural hazards and climate change.
- All voices are enabled and heard, power is more evenly distributed and the community can share its strengths.



Waste Minimisation and Management



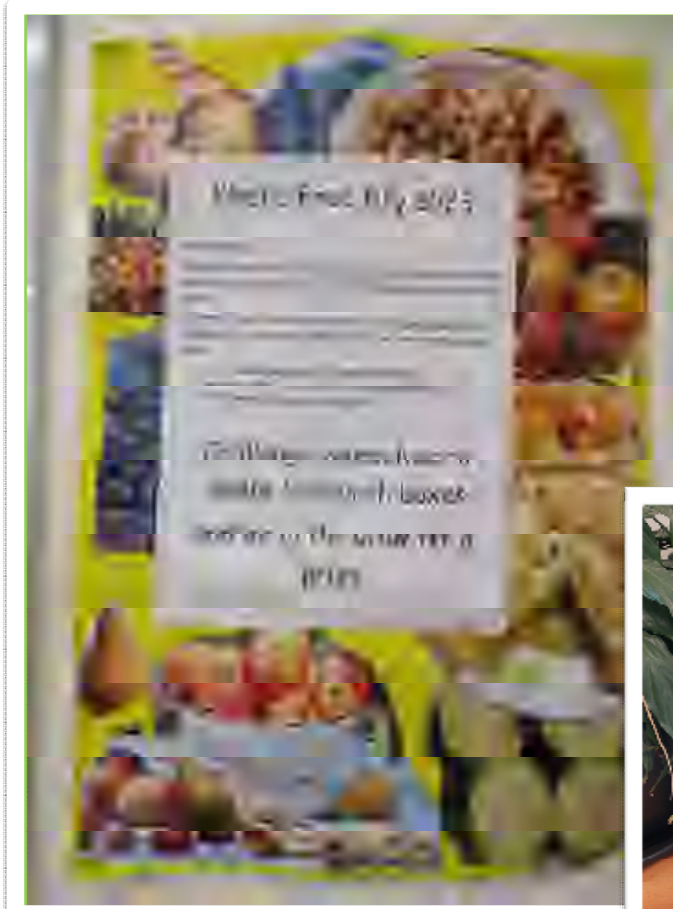
Composting Workshop for kaiako (teachers)



Waste Audit at Kidsfirst Kindergarten,
Hokitika



Waste Minimisation and Management



Plastic Free Lunchbox Challenge



Exchange Table



Tetra Pak Collection Point



Enviroschools in Action – Sustainable Coastlines

- Not just a beach clean up – survey and audit contributing to national beach litter database
- Extending waste minimisation out into the community
- Focus on linking what waste is created at school and what litter ends up on the beach



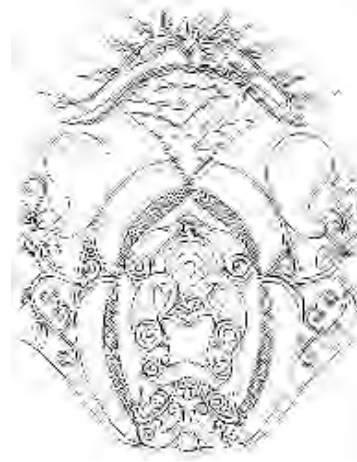
Enviroschools in Action – 1BT Funding for Wadeson Island Planting



TOIMATA
FOUNDATION

Te Uru Rākau  New Zealand Forest Service

Enviroschools in Action – Gardening and Kai Puku Partnership



Our Guiding Principles:

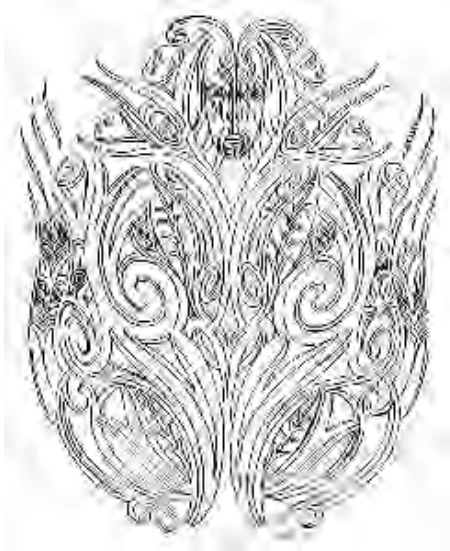
Te Ao Māori

Empowered Learners

Respect for Diversity

Learning for Sustainability

Sustainable Communities



Opportunities/Next Steps

- Staying connected and supporting Kaiako in a range of ways
- Reflecting with Haast School in December
- Conducting waste audits and supporting schools with waste minimisation initiatives
- Connecting schools with Wadeson Island through the Billion Trees funding
- Facilitating connections with the wider community



Find out more and connect with us...

WEBSITE



SIGN UP TO OUR NEWSLETTER!



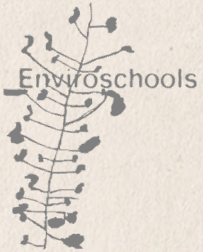
SOCIAL MEDIA



He mihi nui – Thank you!



Department of
Conservation
Te Papa Ataturangi



Lauren Kelley, Enviroschools Regional Coordinator

P 022 137 7003

E lauren.Kelley@enviroschools.org.nz

Laura Neale, Enviroschools Facilitator

P 027 384 2508

E laura.neale@enviroschools.org.nz