

West Coast Regional Waste Assessment & WMMP 2024

June 2024

 Tonkin+Taylor

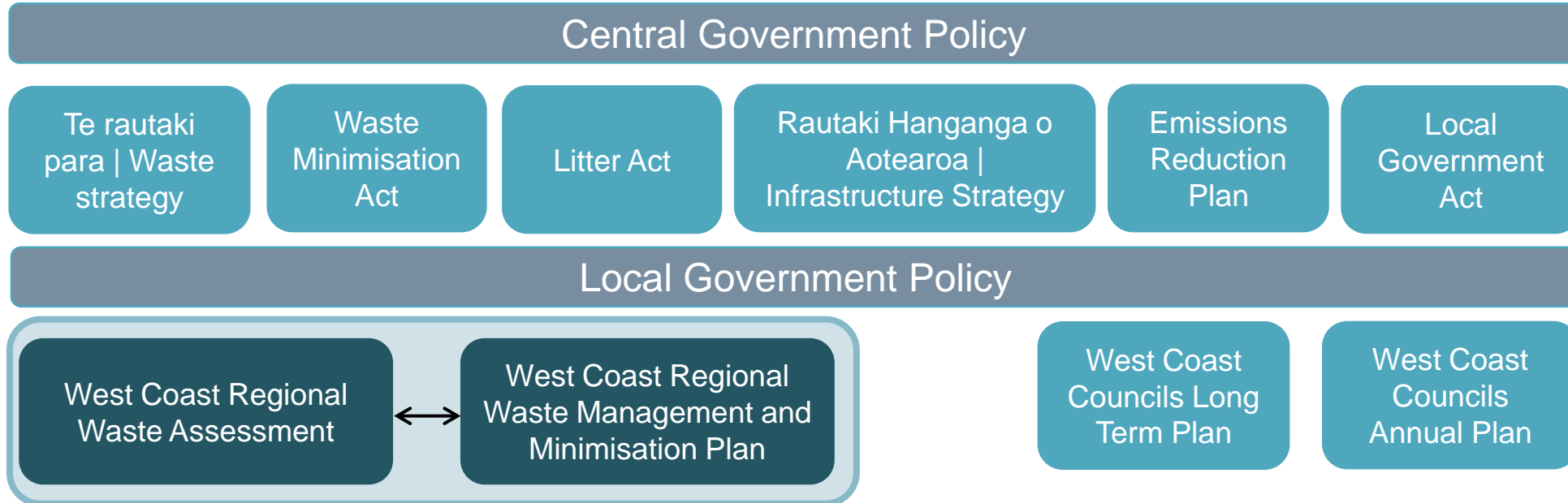


Objectives

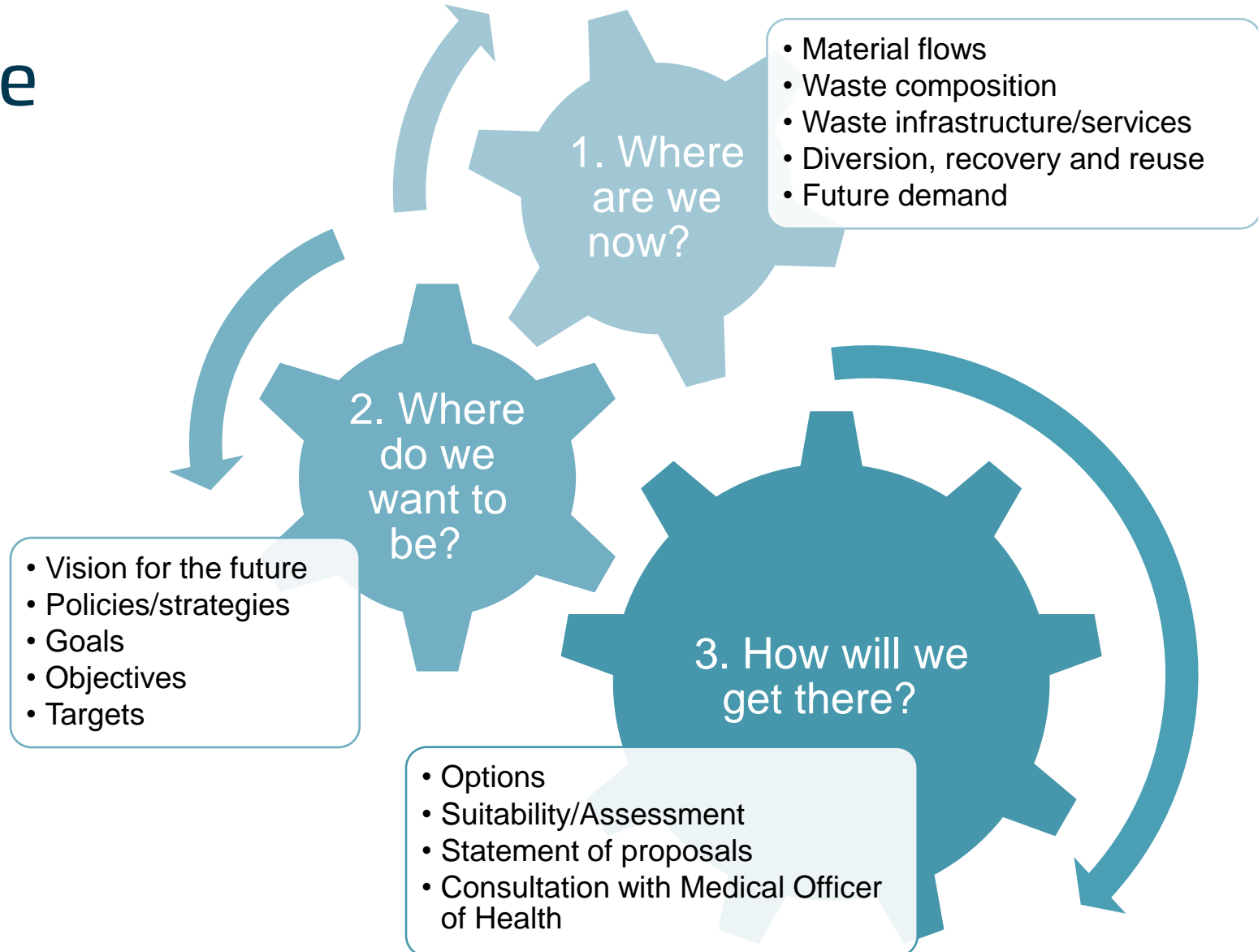
This workshop will:

- Familiarise Elected Members with Councils **statutory waste planning requirements**
- Provide an understanding of the regions **current waste performance**
- Present proposed **vision, goals and objectives**
- Discuss the potential ways for **how** we can get there

Strategic context

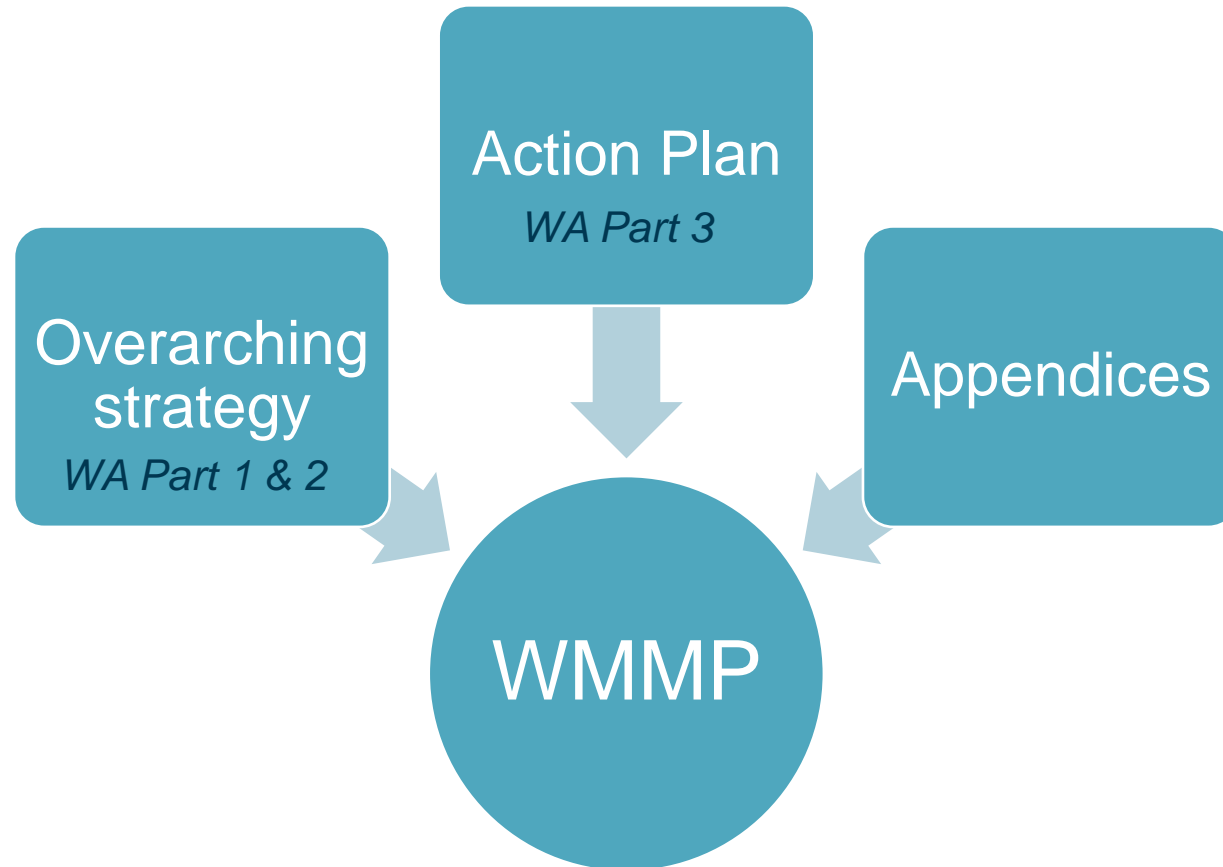


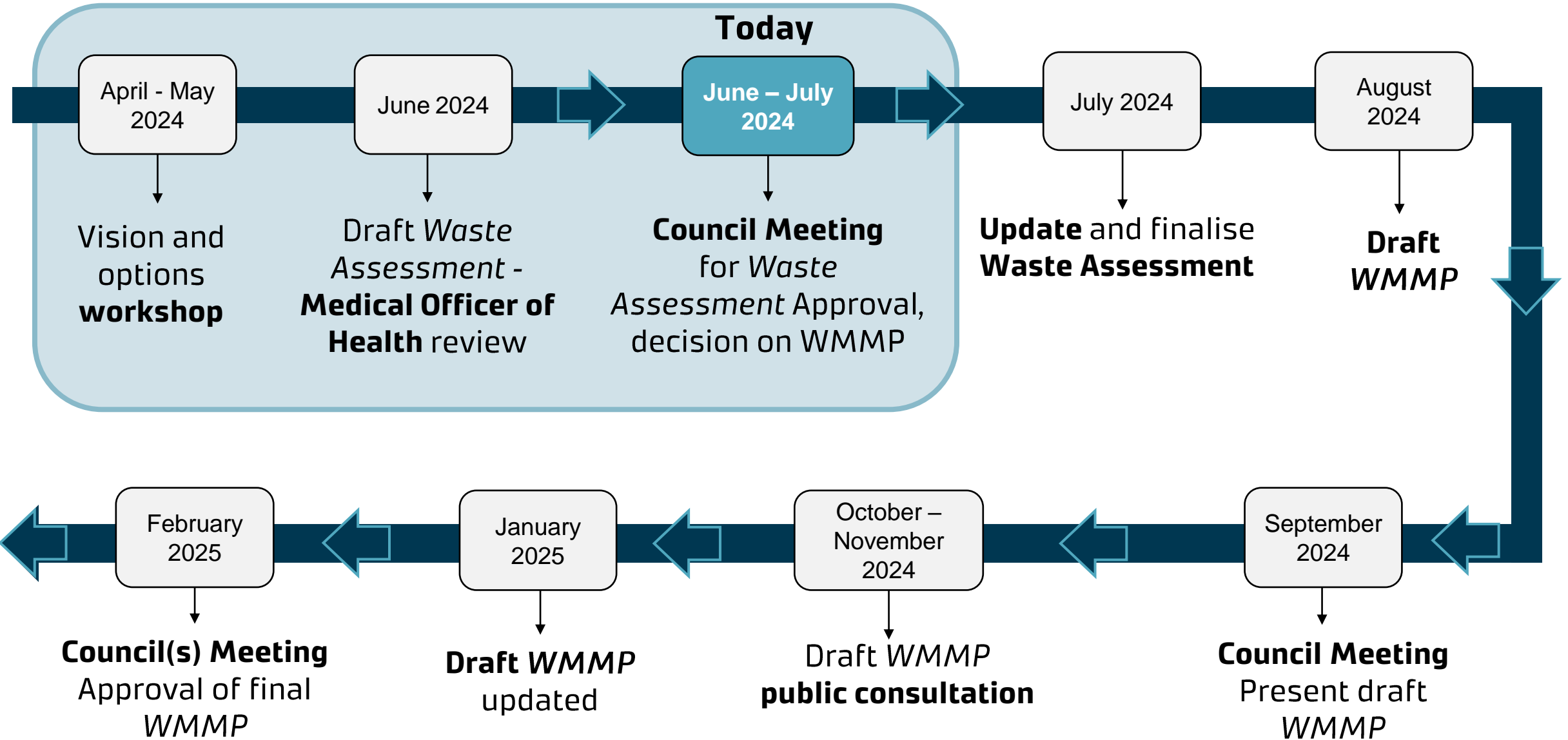
What is a Waste Assessment?



What is a WMMP?

Waste Management and Minimisation Plan





Where are we now?



What have we found out so far?



542kg of waste generated per person.
82% is going to landfill.



Waste generation per capita has increased by 16% between 2018 and 2023.



Current diversion from landfill is 18%.



We estimate that 26% of waste generated is from visitors.

Progress against 2018

2018 target	2018 target	2023/24 progress
Waste disposed to landfill <300 kg per person each year	340	402
Kerbside recycling > 35% by 2025	29	29
Recycling at Transfer stations > 50% by 2025	27%	18%
% resident and visitor satisfaction	> 85%	72 – 80%
Support the Enviroschools programme each year	N/A	19 events annually
Work with others to influence action on waste minimisation	N/A	✓

What are the key issues and opportunities? *Focus areas*



Pause for Comments /
Questions



Where do we want to be?



Vision

By 2030, our enabling systems are working well and behaviour is changing

Goals

1. The building blocks are in place to enable change

2. More activity is circular and we produce less waste

3. Emissions and other environmental indicators are improving

How will we get there?



What's already underway?



Services

- Kerbside refuse
- Kerbside recycling (including glass)
- Glass recycling
- Product stewardship schemes
(*Sept 24*)



Connections

- TAO forum (WasteMINZ)
- Waste contractors



Infrastructure

- 3 Material Recovery Facilities
- 2 major landfills



Education

- EnviroSchools
- Council website



Policy

- Bylaws for solid waste management
- Kerbside standardisation

Focus areas



Organics waste
recovery



Consistent
data collection



Visitor waste



Managing
illegal dumping



Industry waste
recovery



Aligned
kerbside
collections

How?

Partnerships and Collaboration

- Mana whenua
- Industry
- Community

Align services across the region

- Transfer Stations
- Kerbside

Increase public engagement and awareness

- EnviroSchools
- Communication plan
- Attending events

Pause for Questions and Discussions



Where to from here?



